



**BRITANNIA SHOPPING CENTRE**  
 Stockwell Head, HINCKLEY, LE10 1RU

**Property Number: Unit 3**

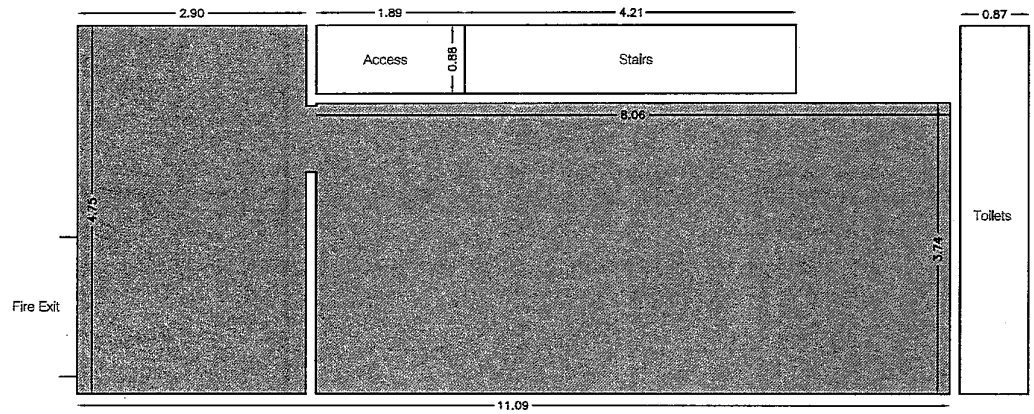
**First Floor  
 Net Internal Area Plan**

	STORAGE	44.0 sq m	474 sq ft
---	---------	-----------	-----------

**TOTAL AREA: 44.0 sq m 474 sq ft**

The following areas have been EXCLUDED from the STORAGE Area:

Access	1.7 sq m	18 sq ft
Stairs	3.7 sq m	40 sq ft
Toilets	4.1 sq m	44 sq ft



Note:

This drawing indicates the extent of the areas quoted, produced to an accuracy commensurate with standard presentation scales. It is held in a scaled digital CAD format.

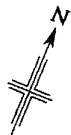
**Drawing No. 16670-U3-A1**

Issue A August 2006

Scaled for presentation purposes

**Plowman Craven PCA**

T +44(0)1582 765586 E info@plowmancraven.co.uk  
 F +44(0)1582 765370 W www.plowmancraven.co.uk

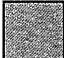


# BRITANNIA SHOPPING CENTRE

Stockwell Head, HINCKLEY, LE10 1RU

Property Number: Unit 3

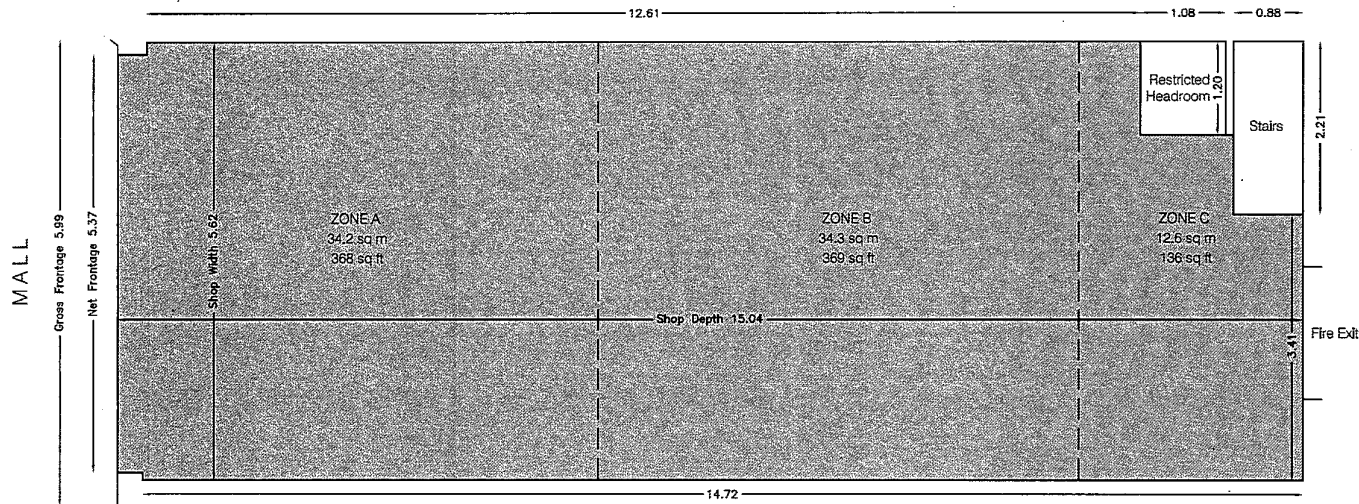
## Ground Floor Net Internal Area Plan

	RETAIL	81.1 sq m	873 sq ft
---	--------	-----------	-----------

**TOTAL AREA: 81.1 sq m 873 sq ft**

The following areas have been EXCLUDED from the RETAIL Area:

Restricted Headroom	1.3 sq m	14 sq ft
Stairs	1.9 sq m	20 sq ft



Note:





This drawing indicates the extent of the areas quoted, produced to an accuracy commensurate with standard presentation scales. It is held in a scaled digital CAD format.

**Drawing No. 16670-U3-AG**

Issue A August 2006

Scaled for presentation purposes

**Plowman Craven PCA**

 +44(0)1582 765566 
  info@plowmancraven.co.uk  
 +44(0)1582 765370 
  www.plowmancraven.co.uk