

BRITANNIA SHOPPING CENTRE
Stockwell Head, HINCKLEY, LE10 1RU

Property Number: Units 10 & 11

**First Floor
Net Internal Area Plan**

	STORAGE	141.5 sq m	1523 sq ft
---	---------	------------	------------

TOTAL AREA: 141.5 sq m 1523 sq ft

The following areas have been EXCLUDED from the STORAGE Area:

Access	1.6 sq m	17 sq ft
Stairs	4.1 sq m	44 sq ft
Toilets	5.9 sq m	64 sq ft

Note:

This drawing indicates the extent of the areas quoted, produced to an accuracy commensurate with standard presentation scales. It is held in a scaled digital CAD format.

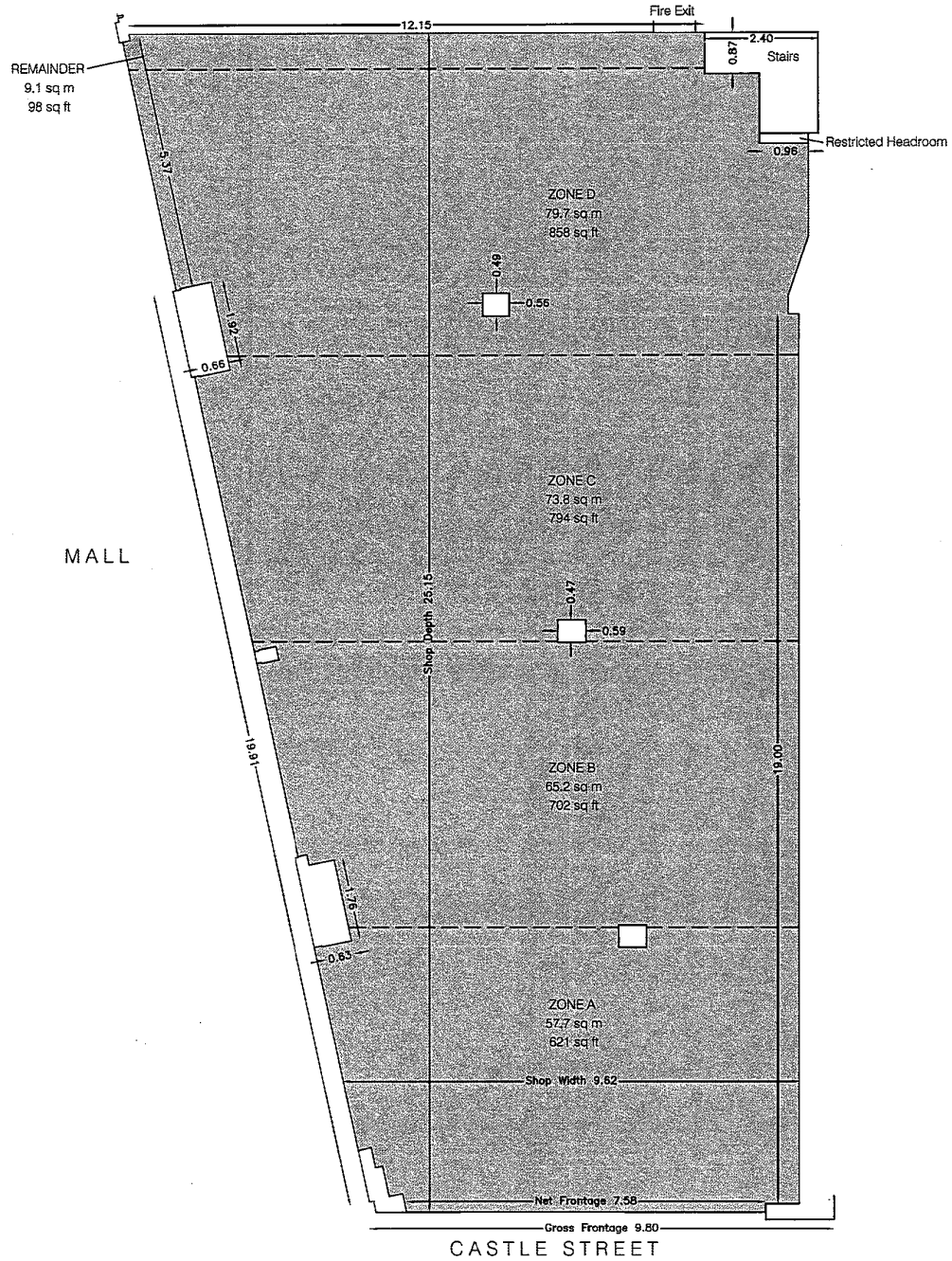
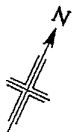
Drawing No. 16670-U10-11-A1

Issue A August 2006

Scaled for presentation purposes

Plowman Craven PCA

 +44(0)1582 765566
  info@plowmancraven.co.uk
 +44(0)1582 765370
  www.plowmancraven.co.uk



BRITANNIA SHOPPING CENTRE
Stockwell Head, HINCKLEY, LE10 1RU

Property Number: Units 10 & 11

**Ground Floor
Net Internal Area Plan**

RETAIL	285.5 sq m	3073 sq ft
--------	------------	------------

TOTAL AREA: 285.5 sq m 3073 sq ft

The following areas have been EXCLUDED from the RETAIL Area:

Restricted Headroom	0.2 sq m	2 sq ft
Stairs	3.7 sq m	40 sq ft

Note:

This drawing indicates the extent of the areas quoted, produced to an accuracy commensurate with standard presentation scales. It is held in a scaled digital CAD format.

Drawing No. 16670-U10-11-AG

Issue A

August 2006

Scaled for presentation purposes

Plowman Craven PCA

+44(0)1582 765566
 info@plowmancraven.co.uk
 +44(0)1582 765370
 www.plowmancraven.co.uk